



2019 MASTERS LEADERSHIP
PROGRAM
BLUEPRINT

GULF COAST INITIATIVE YEAR 3

The Evolving Economy

While maintaining the existing job market, we must attract new industries supporting innovative technologies which complement the existing natural and economic environment found along Coastal Mississippi

Presenters:

Cori Gavin – Environmental Department Manager, Neel-Schaffer, Inc.

Stephanie Barthes – Operations Assistant, Chevron Products Company

Jennifer Baxter – Communications Director, Hancock County Port and Harbor Commission

Brian Fulton – County Administrator, Jackson County

Johnny Marquez – Director of Coastal Programs, Mississippi Wildlife Federation

January 23, 2020

The Evolving ECONOMY

discussion topics

- SWOT Analysis
- State of the Economy
- Workforce
- Education
- Infrastructure
- Quality of Life

key messages

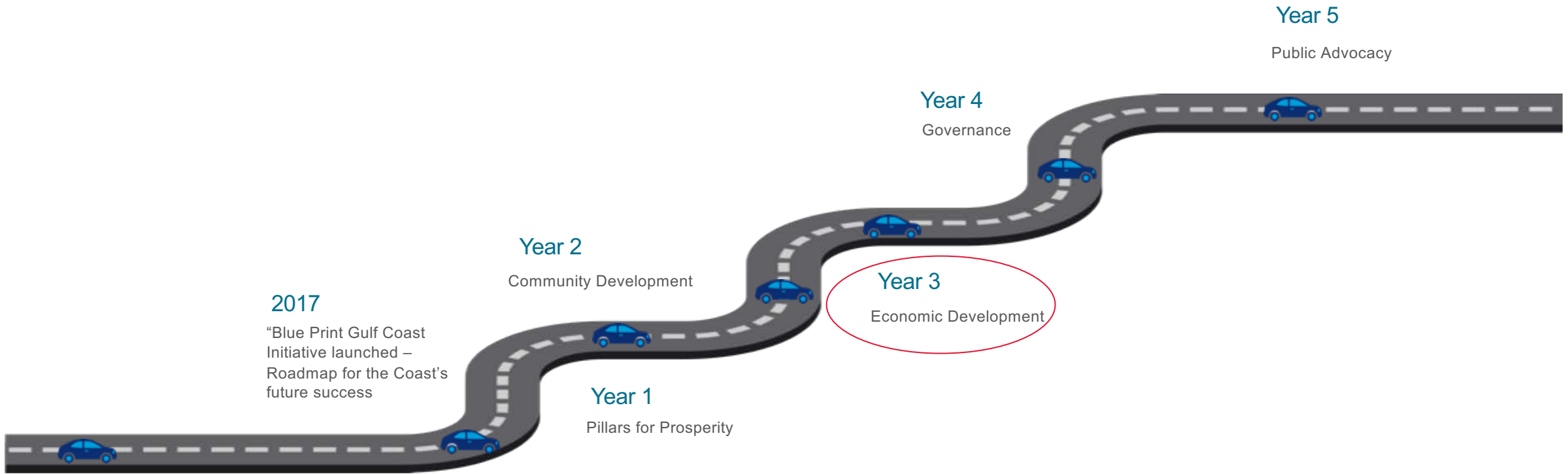
In its simplest terms, economy is the system of how money is made and used in a region

We define Coastal Mississippi's economic system as:

- Workforce
- Education
- Infrastructure
- Quality of Life

desired outcome

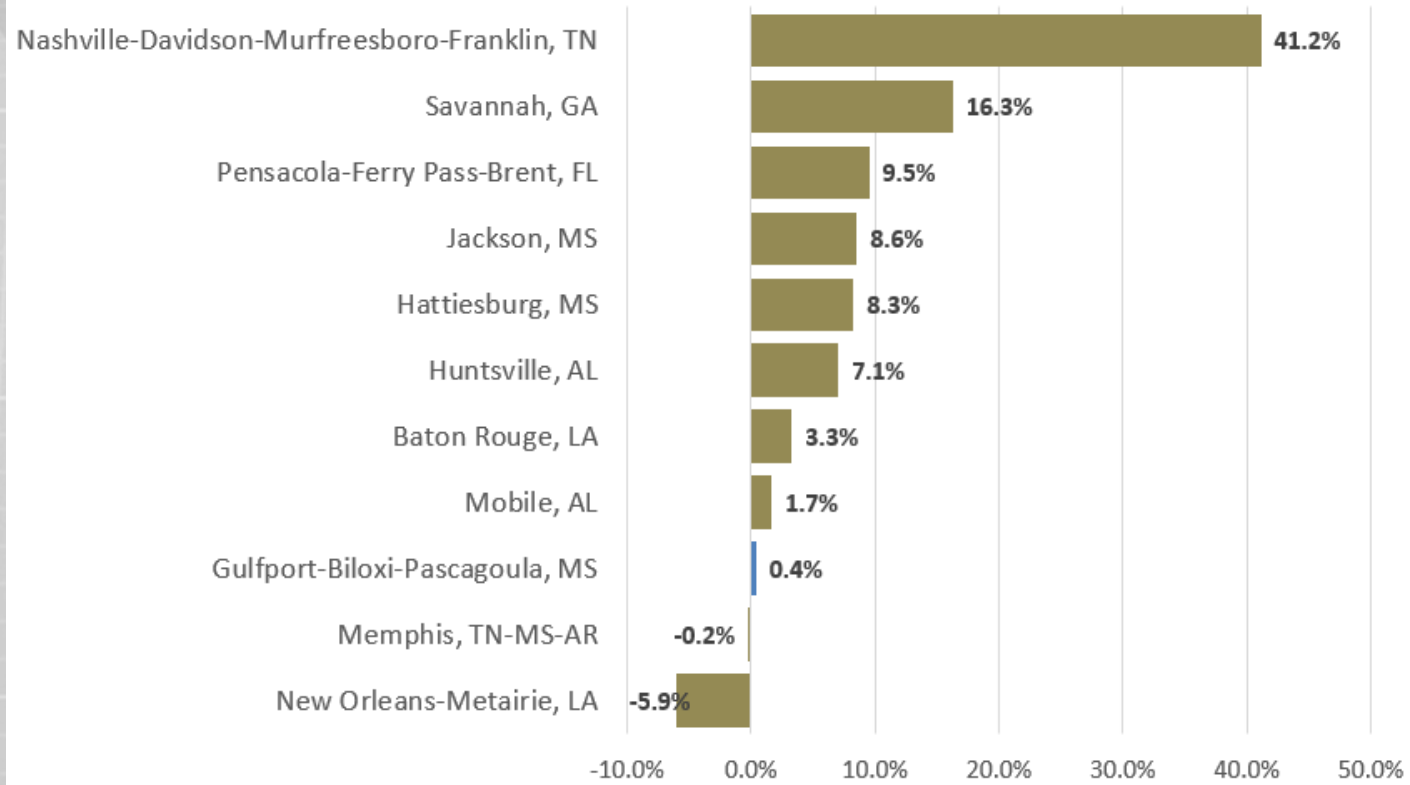
Inspire Gulf Coast Business Council to read, analyze, understand, and apply our recommendations in the key areas of economic development: workforce, education, infrastructure, and quality of life.



S STRENGTHS	W WEAKNESSES	O OPPORTUNITIES	T THREATS
<ul style="list-style-type: none"> •Gulfport-Biloxi International Airport •Gaming •Geographical location •Affordability •Entertainment •Beaches •History •Friendliness •Proximity to New Orleans and Mobile •Federal allocations •Military presence 	<ul style="list-style-type: none"> •Coordination between cities/counties •Vision •Roadway accessibility •Beach closures •Low wage employment •Public transportation •Growth rate •Market-rate housing •Developable land •Zoning inconsistencies •Inclusivity •Hurricane resiliency 	<ul style="list-style-type: none"> •Public-private partnerships •Small business development •Blue and Space economy •Education and workforce development •Expressway •Federal funding •Infrastructure •Walkability •Community relations with military •Nonprofit groups •Broadband internet •Flood zone revisions 	<ul style="list-style-type: none"> •Gulf of Mexico ecosystem health •Natural and man-made disasters •Brain drain •Government contracts •Government closures •Restrictive regulatory laws •State laws •Negative state perceptions •Automation

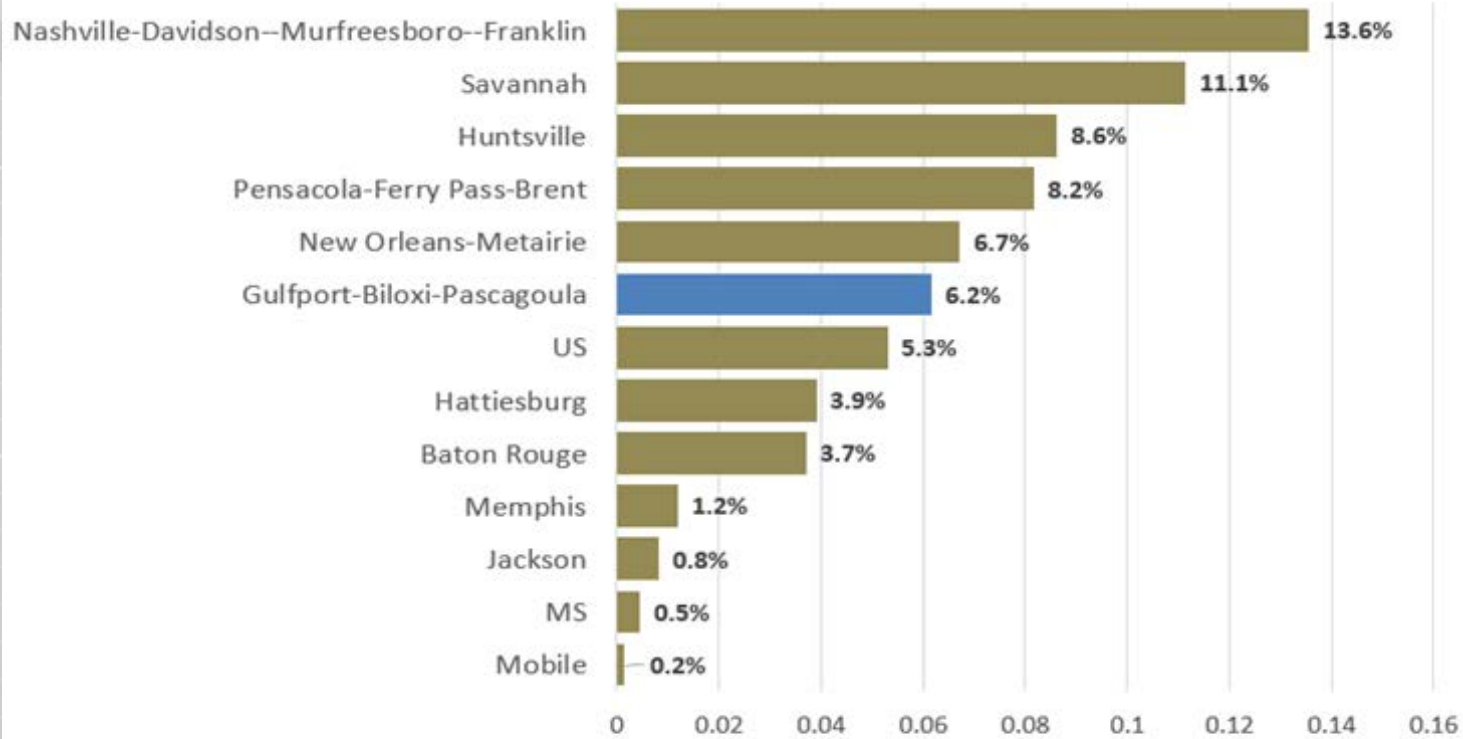
Post-Recession Growth (GDP)

Real GDP Growth 2010-2017



Post-Recession Growth

Population 2010-2017



November 2018

MS University Research Center, IHL

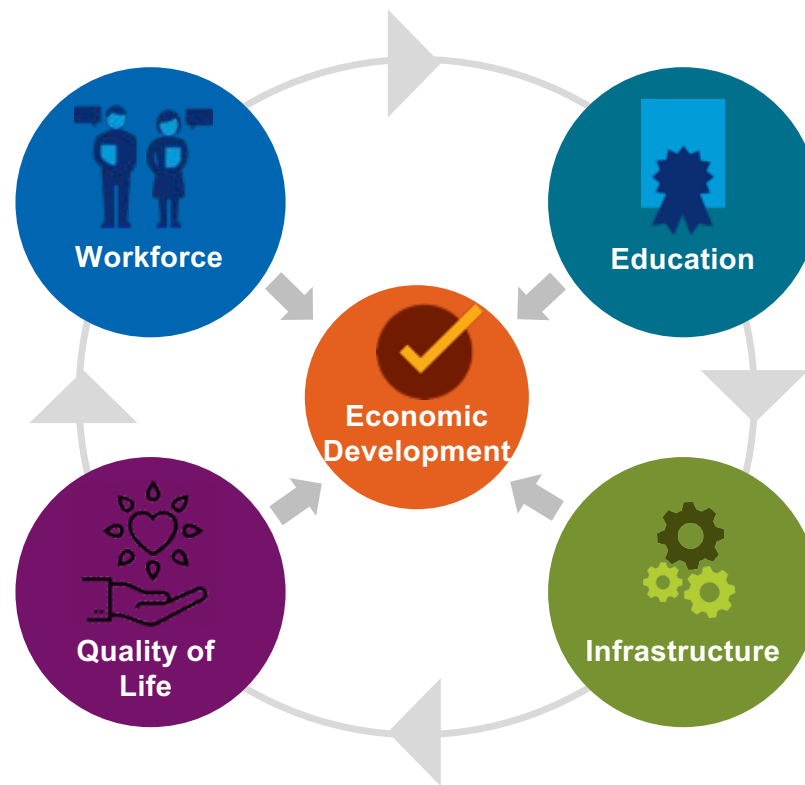
WHAT WE APPLIED

FROM NASHVILLE

The key to rising through the national ranks of economic success is dependent on four important concepts:

Workforce
Transition our workforce to new industries supporting the Blue and Space Economy and Healthcare while attracting higher margin employers

Quality of Life
Create walkable communities while leveraging Coastal Mississippi's natural assets to attract tourists and offer better recreational opportunities

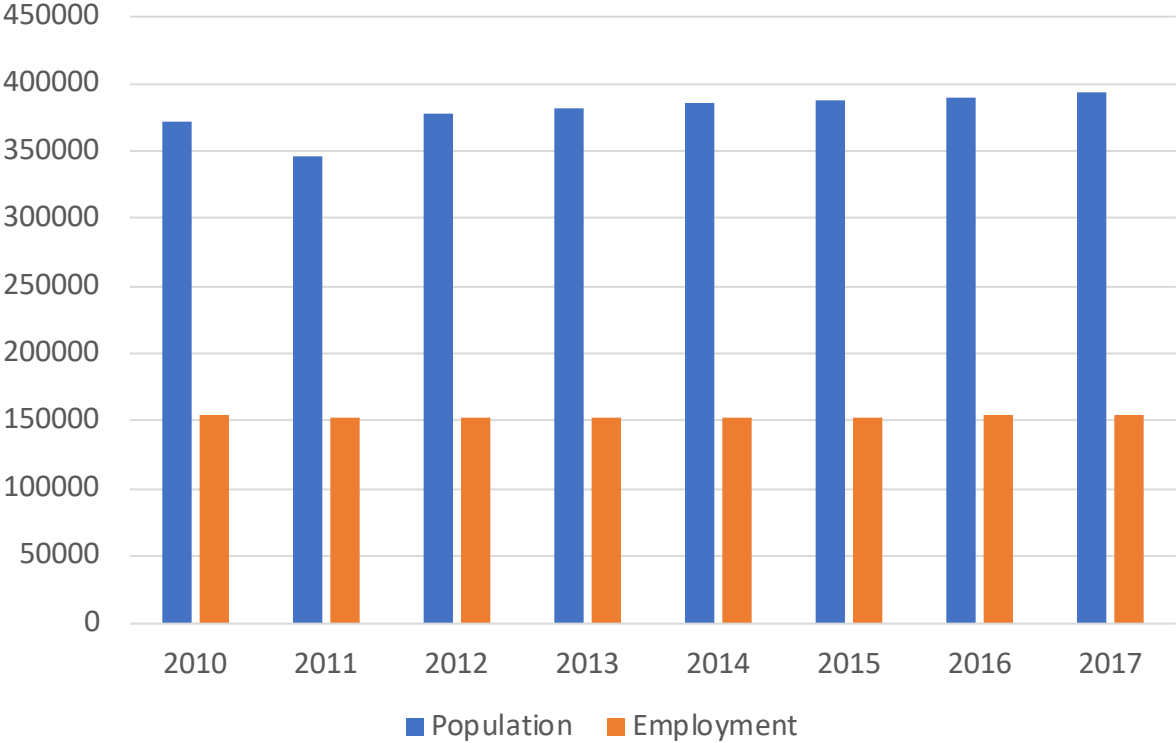


Education
Produce a combination of higher educated and skilled workers to improve the labor market through a wholistic approach from pre-k through advanced higher education and professional development

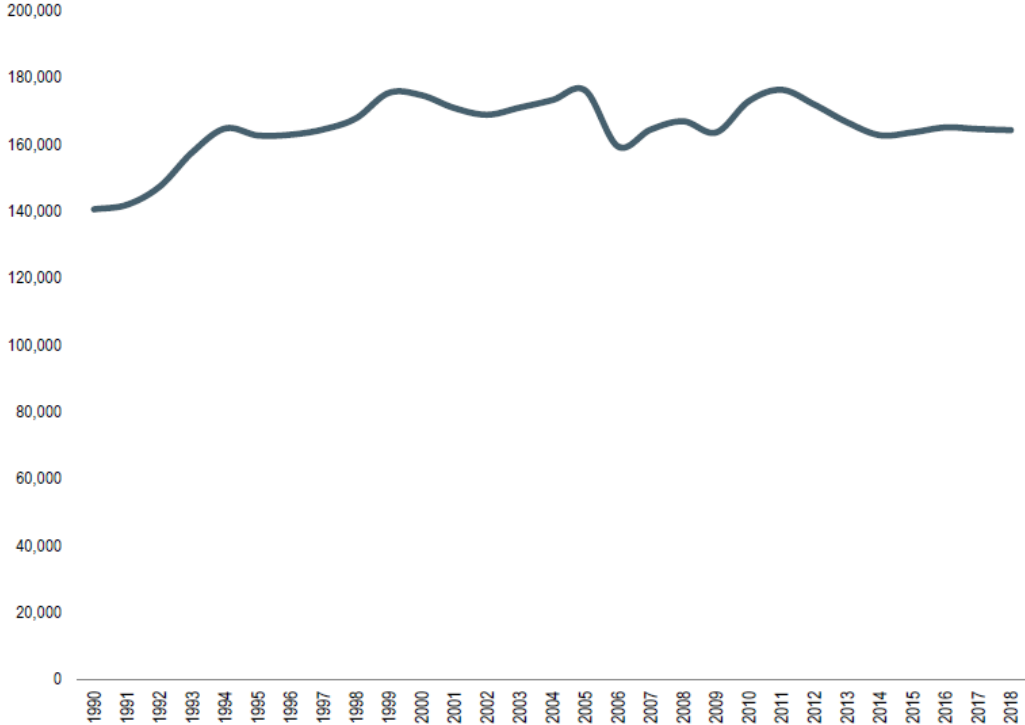
Infrastructure
Create infrastructure that improves connectivity throughout the region for all modes of transportation

Workforce

Population vs. Employment



TITLE Size of Gulfport-Biloxi-Pascagoula MSA's Labor Force
SUBTITLE
SOURCE US Bureau of Labor Statistics.



2019

MASTERS LEADERSHIP PROGRAM

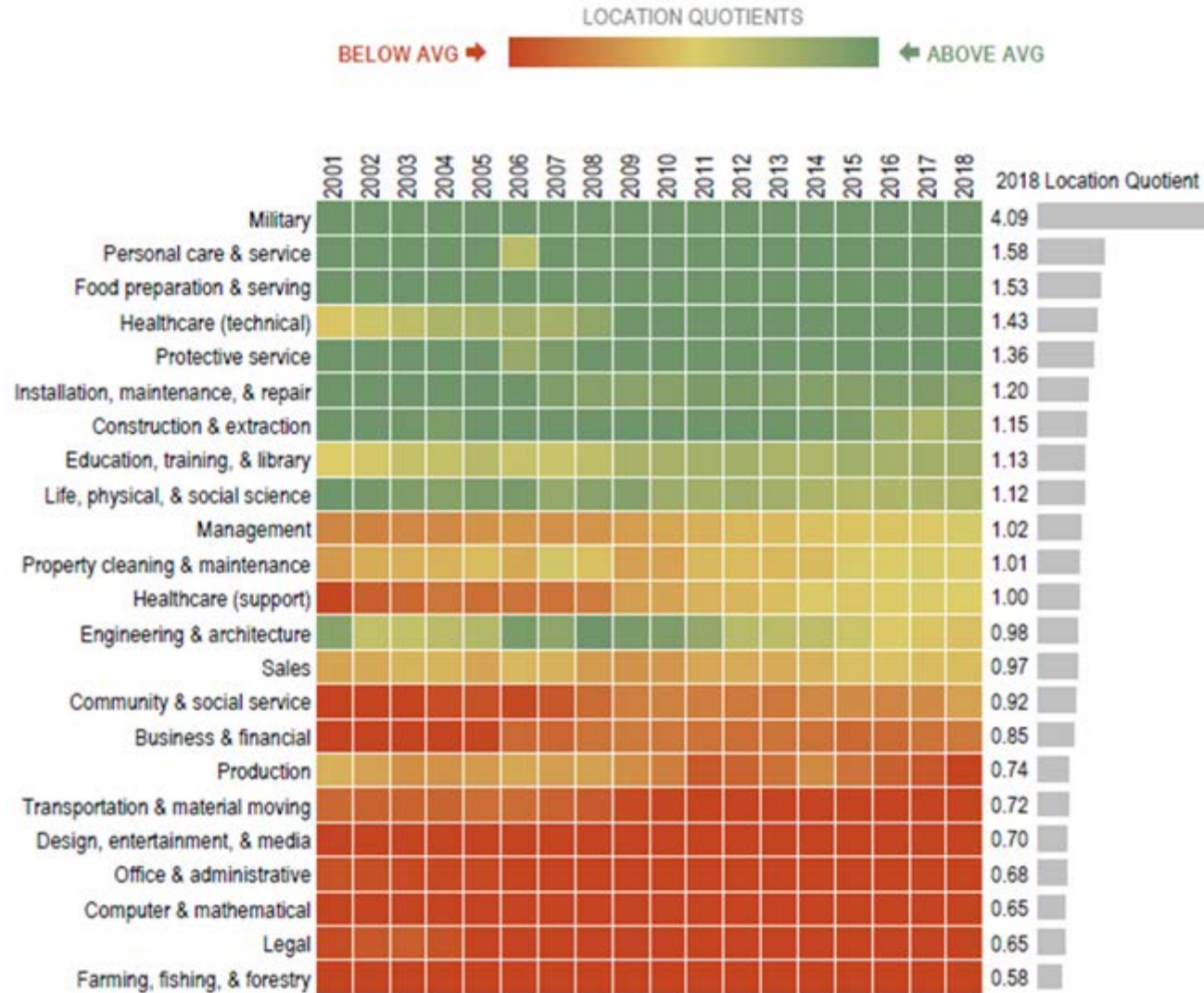
BLUEPRINT

GULF COAST INITIATIVE YEAR 3

TITLE Gulf Coast Historical Occupational Group Concentration

SUBTITLE Concentration of employment by occupational group as shown by location quotients (LQs)

SOURCE Emsi 2019.3 – QCEW Employees, Non-QCEW Employees, and Self-Employed.



2019

MASTERS LEADERSHIP
PROGRAM

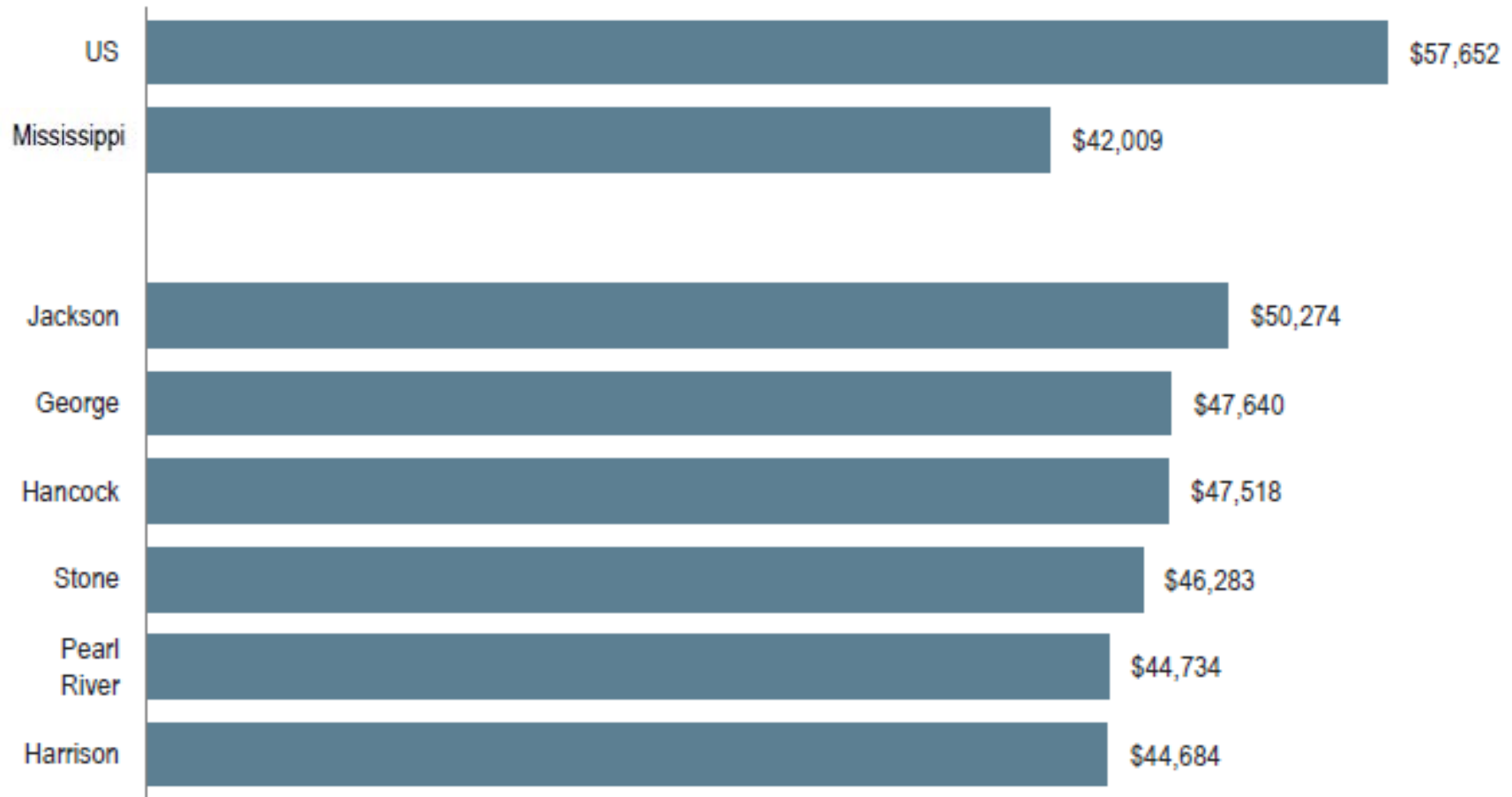
BLUEPRINT

GULF COAST INITIATIVE YEAR 3

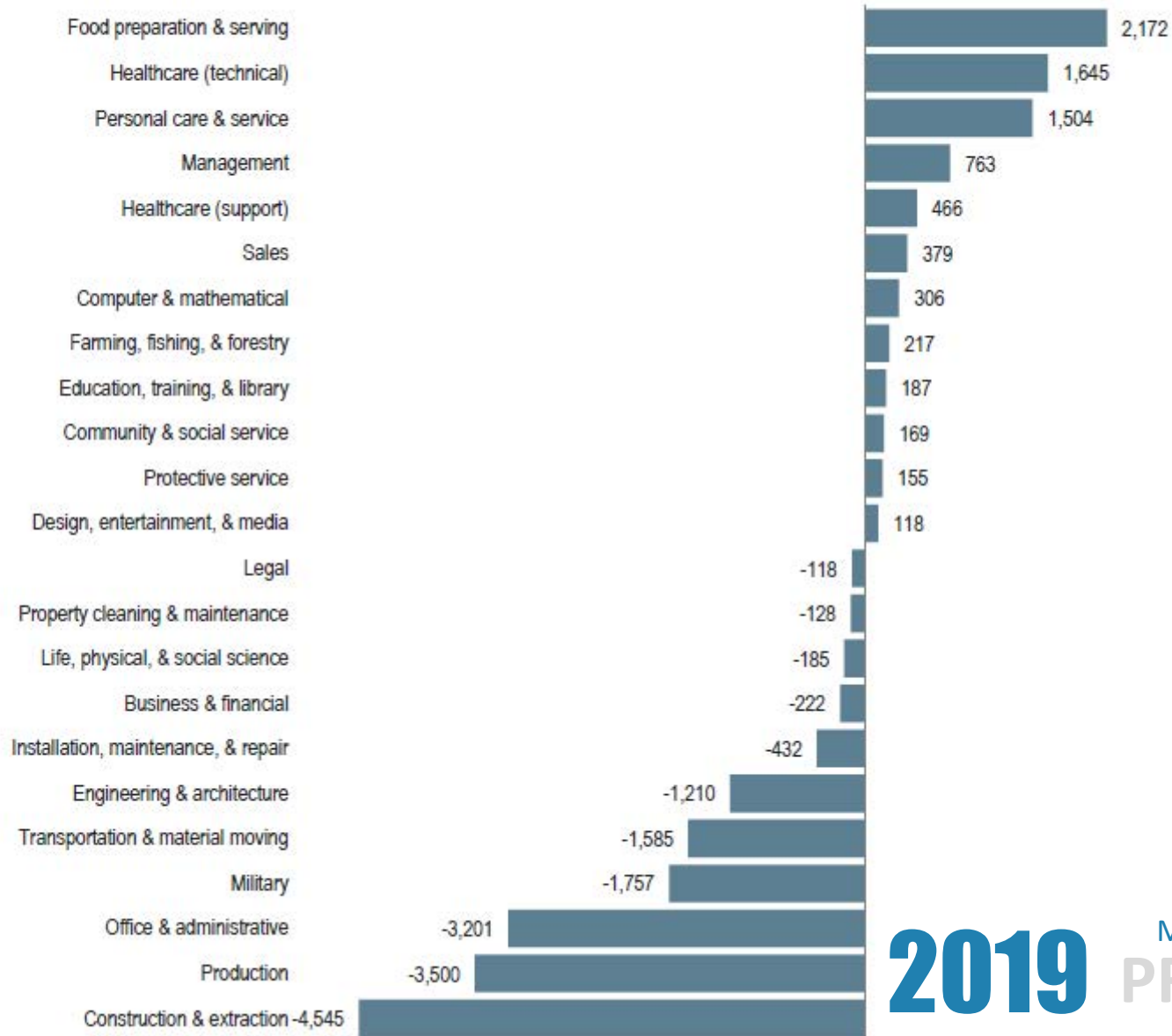
TITLE **Median Household Income**

SUBTITLE

SOURCE US Census Bureau, American Community Survey, 5-year averages for the period 2013-2017.



TITLE Gulf Coast 10-Year Net Job Growth by Occupational Group, 2008-2018
 SUBTITLE
 SOURCE Emsi 2019.3 – QCEW Employees, Non-QCEW Employees, and Self-Employed.



2019

MASTERS LEADERSHIP
PROGRAM

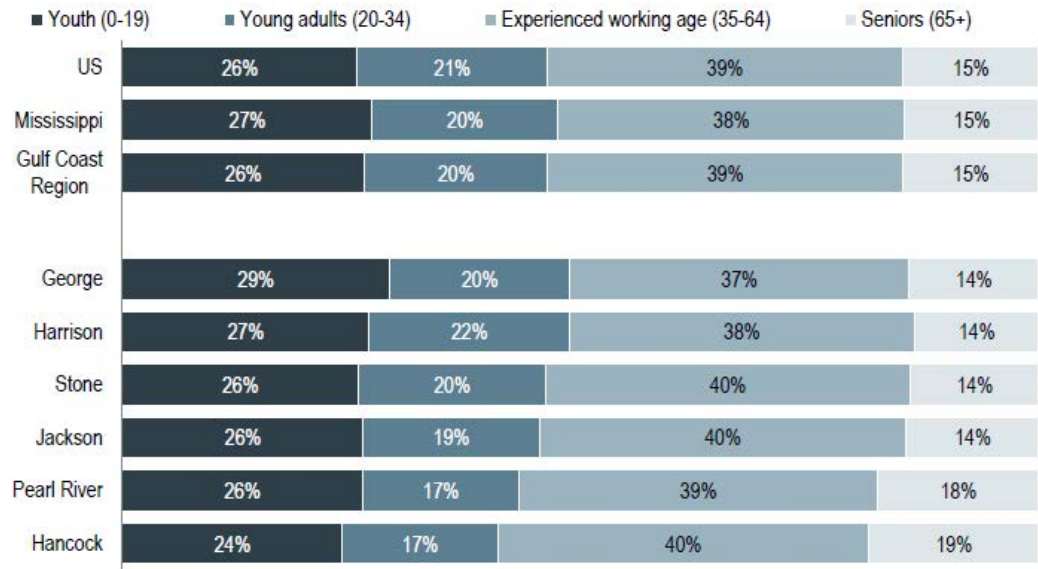
BLUEPRINT

GULF COAST INITIATIVE YEAR 3

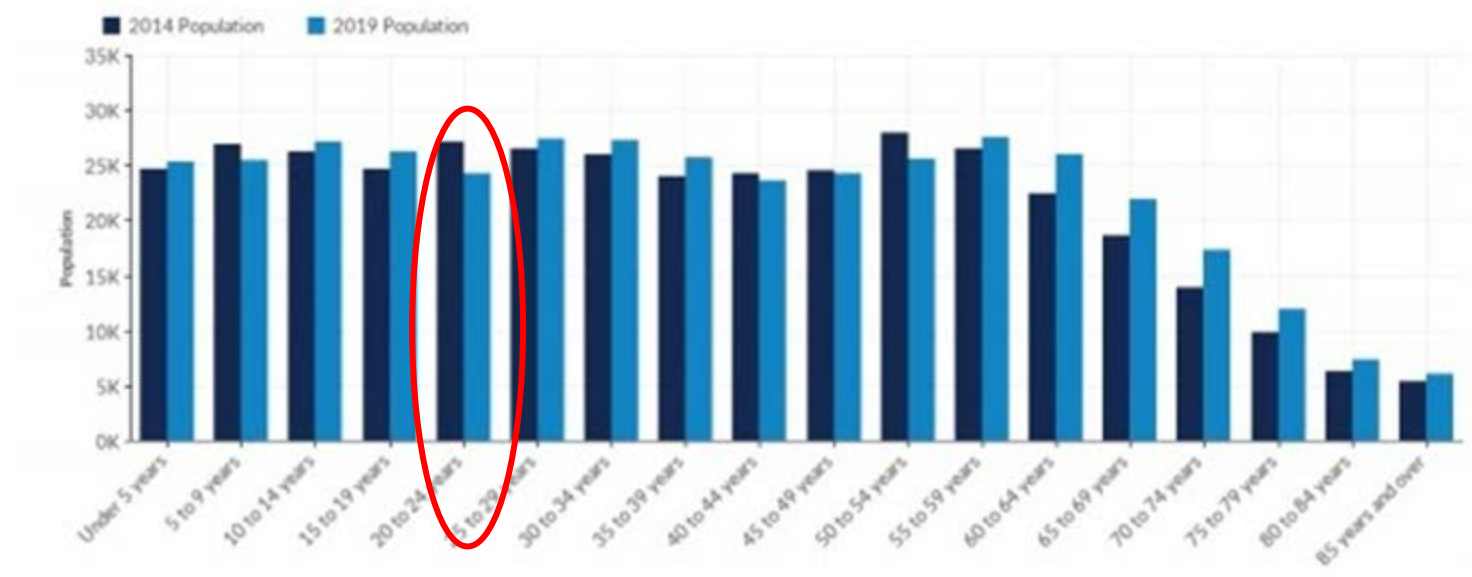
TITLE Age Structure

SUBTITLE

SOURCE US Census Bureau, American Community Survey, 5-year averages for the period 2013-2017.



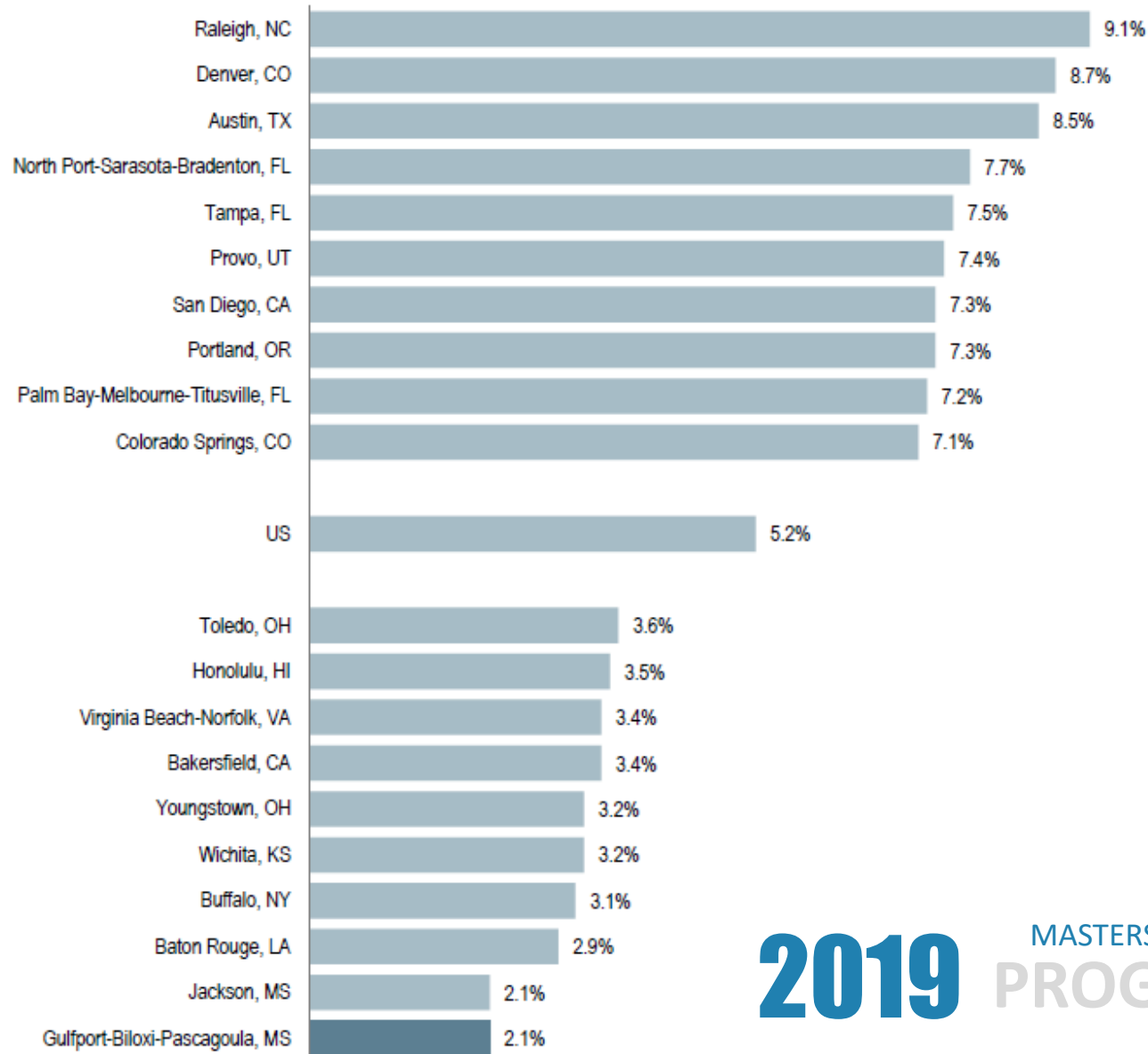
Population by Age Cohort



TITLE Percent of employed people working remotely, 2017

SUBTITLE Gulfport-Biloxi-Pascagoula metro area in context of top 10 and bottom 10 metro areas (among 100 largest) ranked by share of remote workers

SOURCE US Census Bureau, American Community Survey, 1-year average, 2017.



2019

MASTERS LEADERSHIP
PROGRAM

BLUEPRINT

GULF COAST INITIATIVE YEAR 3

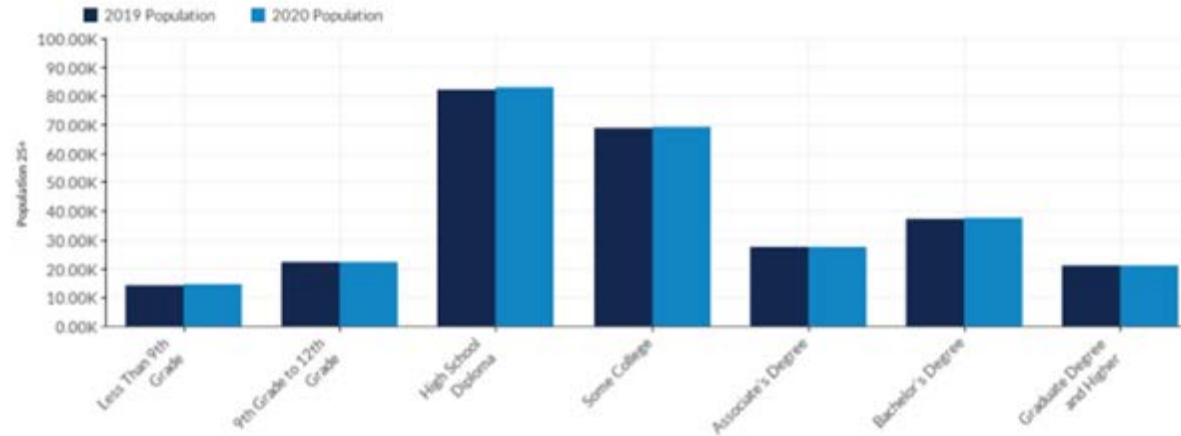
Workforce Recommendations

Employment

	Goals by 2023	Goals by 2026	Goals by 2030
Employment	<ul style="list-style-type: none"> • Implement workforce programs to educate and train employees to fill the gaps in our labor force • Create a coast-wide community profile tool to inform potential developers on income, workforce, demographics, and land use strategies • Provide funding for nonprofits to create programs to get people back in the workforce such as employing homeless and low-income population to clean and beautify public spaces, transportation corridors, and the beaches 	<ul style="list-style-type: none"> • Provide incentives to inspire college educated people to live, learn, and work in Coastal Mississippi • Invest in business accelerators at coastal colleges to facilitate innovation • Establish legislation to allow unmanned systems and other technologies to be allowed to be tested along Coastal Mississippi. This will attract numerous businesses and government entities to the area in this emerging field 	<ul style="list-style-type: none"> • Create programs for college graduates and entrepreneurs to live in Coastal Mississippi for five years to increase retention in labor force gaps • Acquire properties around economically significant areas, such as ports and airports, to encourage future industrial development • Create incentives and advocate for promoting public-private partnerships

Education

Educational Attainment by Level



Education Level	2019 Population	2020 Population	2019 % of Population	2019 State % Population	2019 National % Population
Less Than 9th Grade	14,000	14,547	5%	7%	7%
9th Grade to 12th Grade	22,145	22,078	8%	11%	7%
High School Diploma	82,092	82,809	30%	31%	28%
Some College	68,769	69,177	25%	22%	21%
Associate's Degree	27,517	27,639	10%	9%	8%
Bachelor's Degree	37,171	37,717	14%	13%	19%
Graduate Degree and Higher	20,897	20,894	8%	8%	12%
	272,591	274,862	100%	100%	100%

2019 MASTERS LEADERSHIP PROGRAM

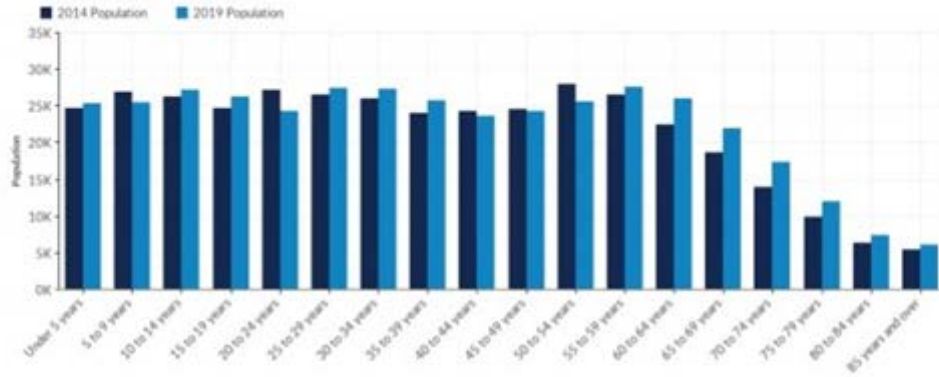
BLUEPRINT
GULF COAST INITIATIVE YEAR 3

Year	State Investment	Degrees Awarded	State Investment Per Degree Awarded
2014-2015	756,500,000	16,813	44,994.94
2015-2016	781,800,000	17,102	45,713.95
2016-2017	748,700,000	17,760	42,156.53
2017-2018	668,200,000	18,248	36,617.71
2018-2019	672,700,000	UNK	UNK

Data Set from Mississippi Institutions of Higher Learning, 2019

Data represents State dollars spent and degrees awarded from MS's 8 public universities.

Population by Age Cohort



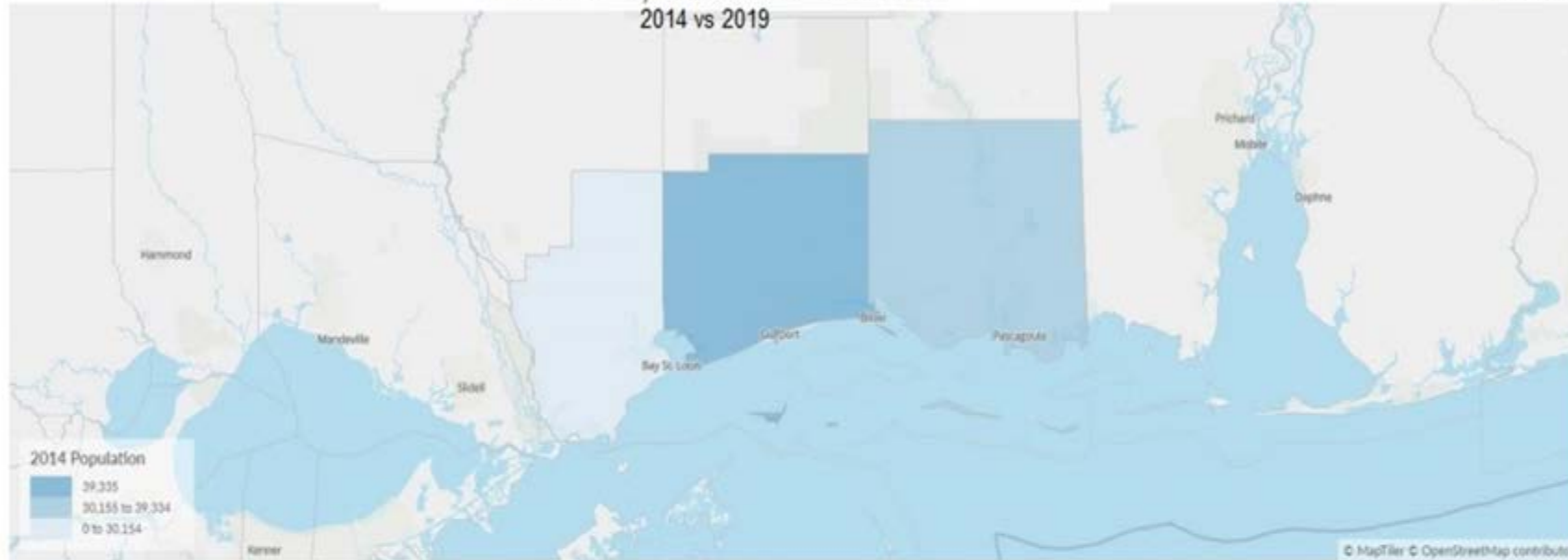
Age Cohort	2014 Population	2019 Population	Change	% Change	2014 % of Cohort
Under 5 years	24,698	25,364	666	3%	6.41%
5 to 9 years	26,827	25,379	-1,448	-5%	6.96%
10 to 14 years	26,225	27,137	912	3%	6.80%
15 to 19 years	24,658	26,192	1,534	6%	6.40%
20 to 24 years	27,114	24,220	-2,894	-11%	7.03%
25 to 29 years	26,451	27,391	940	4%	6.86%
30 to 34 years	26,004	27,233	1,229	5%	6.74%
35 to 39 years	24,037	25,752	1,715	7%	6.23%
40 to 44 years	24,245	23,535	-710	-3%	6.29%
45 to 49 years	24,553	24,282	-271	-1%	6.37%
50 to 54 years	27,973	25,501	-2,472	-9%	7.26%
55 to 59 years	26,485	27,580	1,095	4%	6.87%
60 to 64 years	22,352	25,964	3,612	16%	5.80%
65 to 69 years	18,595	21,912	3,317	18%	4.82%
70 to 74 years	13,883	17,245	3,362	24%	3.60%
Total	385,539	399,994	14,455	4%	100.00%

Educational Attainment Map

Associate's, Bachelor's and Master's

Emsi 2019

2014 vs 2019



County	County Name	Total Population 2019	Percentage of Population with Degree 2019	2014 Population	2019 Population	2014 - 2019 Population Change	2014 - 2019 Population % Change
28047	Harrison	204,933	21.23%	39,335	43,499	4,164	+11%
28059	Jackson	142,152	21.27%	30,155	30,231	76	+0%
28045	Hancock	47,053	22.92%	10,237	10,781	544	+5%
				79,727	84,512	4,785	+6%



- Jan 27 Homeschool Monday: Engineering**
Mon 9 AM - INFINITY Science Center - Pearlington, Missi...
You like INFINITY Science Center
- Feb 1 Science Saturday: Wildlife Rescue**
Sat 10 AM - INFINITY Science Center - Pearlington, Missi...
Michael is interested
- Feb 15 Science Saturday: For the Love of Chemistry**
Sat 10 AM - INFINITY Science Center - Pearlington, Missi...
Michael and Shelly are interested

HANCOCK COUNTY CAREER TECHNICAL CENTER EXPANDING ITS AWARD-WINNING POLYMER PROGRAM



Hancock County Career Technical Center expanding its award-winning polymer program

The Hancock County Career Technical Center's award-winning polymer program will begin its sixth year in the 2015-2016 school year.

"It's grown from materials science Myrick. Existing recycling, polymer chemistry of ma

Photo Release--Huntington Ingalls Industries Awards More Than \$99,000 in STEM Grants to Gulf Coast Schools

Jan 17, 2020
Ingalls Shipbuilding

PASCAGOULA, Miss., Jan. 17, 2020 (GLOBE NEWSWIRE) -- Huntington Ingalls Industries (NYSE: HII) Ingalls Shipbuilding division has awarded \$99,592 in grants to 28 STEM-related initiatives from schools and educational organizations in Mississippi and Alabama.

This is the program's 12th year. Ingalls has awarded more than \$1 million for science, technology, engineering and mathematics projects during that period.

"These projects expose students to innovative concepts, sharpen their critical thinking skills and broaden their understanding of technology-driven professions," said Edmond Hughes, Ingalls' vice president of human resources and administration. "Ingalls is committed to partnering with educators early to promote student engagement in these vital academic disciplines."

2020 Ingalls Shipbuilding STEM grant recipients:

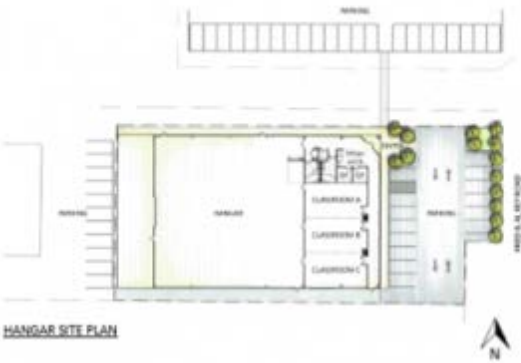
- Alabama School of Mathematics and Science (AMS):** Over the course of 24 months, students will use an air quality monitor to conduct research at Alabama landfills and learn how air quality is affected by a variety of factors. \$2,540
- Bay High School (Miss.):** Students will experience managing an aquaculture system. They will be responsible for feeding various fish species, water filtration, water sampling and recording utilities usage. \$4,394



Ingalls Shipbuilding presented more than \$99,000 in grants to Mississippi and Alabama educators for 28 STEM-related projects. Ingalls' STEM grant program is in its 12th year and has awarded over \$1,000,000 in educational funding. Photo by Derek Fountain/HII.

Gulfport STEM students design SWATBOT with local police





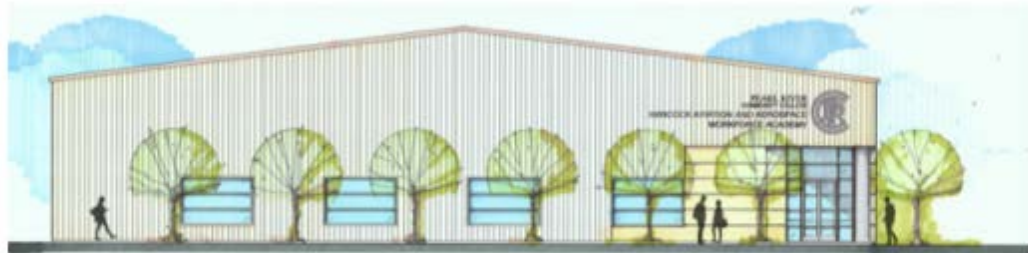
HANGAR SITE PLAN

PEARL RIVER COMMUNITY COLLEGE
ACADEMY HANGAR
 FRED & AL KEY ROAD, KILN, MS 39556

A NEW BUILDING FOR THE:
AVIATION AND AEROSPACE ACADEMY HANGAR

This new 18,000 square foot Hangar and Classroom facility will be an extension of the Academy with focus on training space as well as state of the art classroom learning environments. Direct runway access will allow for study and testing of operational vehicles with attention given to state of the art composites and sheet metal materials. Aviation systems and power plant design, repair and maintenance can be studied, performed and tested in real time on operational equipment. The facility is located west of Fred and Al Key Road with direct access to the Stearns Airport runway, service and fueling facilities.

Square Footage:	18,000 total
Classrooms:	3 multipurpose classrooms w/ operable partitions allowing for flexible use and arrangement.
Office:	2 full-time facility
Hangar:	16,000 square foot indoor hangar space with 80 vehicle access door and running access.
Direct:	2,500 square foot roofed outdoor study area.
Miscellaneous:	Student break area, secure storage areas, restrooms, parking for 18 vehicles.



FRONT ELEVATION



MSU to build innovative \$3 million Northern Gulf Aquatic Food Research Center on Mississippi Coast

USM Selected to Lead Oyster Aquaculture Consortium

Fri, 07/12/2019 - 09:13am | By: James Skrmetta

The Gulf States Marine Fisheries Commission, in partnership with the National Oceanic and Atmospheric Administration (NOAA), is funding a research consortium led by The University of Southern Mississippi's (USM) Thad Cochran Marine Aquaculture Center (TCMAC) that addresses needs surrounding oyster aquaculture in the Gulf of Mexico.

"We are excited to lead the consortium in the Gulf of Mexico," said Thad Cochran, USM's director of the state's restoration and

Center for Ocean Enterprise Breaks Ground at the Port of Gulfport

Fri, 11/08/2019 - 17:26pm



GOVERNOR BRYANT'S OCEAN TASK FORCE:

CHARTING THE FUTURE OF MISSISSIPPI'S OCEAN TECHNOLOGY ECONOMY



NOARC SET TO MAKE WAVES WITH "BLUE ECONOMY"

April 24, 2019



Hancock County, Mississippi - The National Oceans and Applied Research Center (NOARC) is about to take the plunge.

When Gov. Phil Bryant created NOARC in 2012, he set a lofty goal for Hancock County. He said he wanted it to be the Mississippi Coast's Woods Hole, a reference to the esteemed ocean-research center in Massachusetts. Bryant said he wanted in a matter of years to see a booming "blue economy" in Mississippi's waters.

Since then, NOARC's program architects have been quietly working toward that goal.

NOARC is now ready for Phase 2: Putting those plans into action. Its next step was the recent move to offices in Hancock County's Stennis International Airport (KHSB) terminal, where it is readily accessible to its business partners from around the world.

"For the first five years, we were incubating NOARC in the Mississippi State University Space and Technology Center at Stennis Space Center (SSC). The University leaders were instrumental to NOARC's start-up with valuable advice and

technical assistance," NOARC President David Brannon said. "The move to this office space, here at the

Education Recommendations

Education

Goals by 2023

- Publicly fund pre-K programs across Coastal Mississippi to encourage mandatory early education systems
- Continue to reintegrate vo-tech programs into all Coastal Mississippi high schools
- Task local University to address coast-specific data & statistics as all indicators point to Coastal schools being separate from the state statistics as a whole
- Fund programs to encourage non-traditional students to continue education supporting the supply for technical jobs along the coast

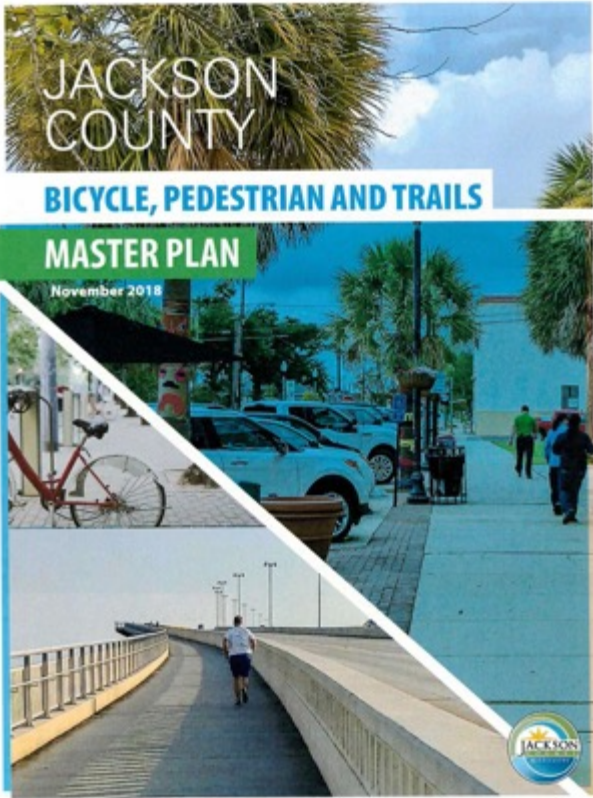
Goals by 2026

- Subsidize youth development organizations (Scouts, Boys and Girls Club, STEM schools) to help create better citizens that are prepared for the workforce
- Invest in dual enrollment programs between high schools and colleges to allow for an earlier advantage when entering continuing education and the workforce
- Encourage public universities to correlate degree programs based upon need in the local job markets

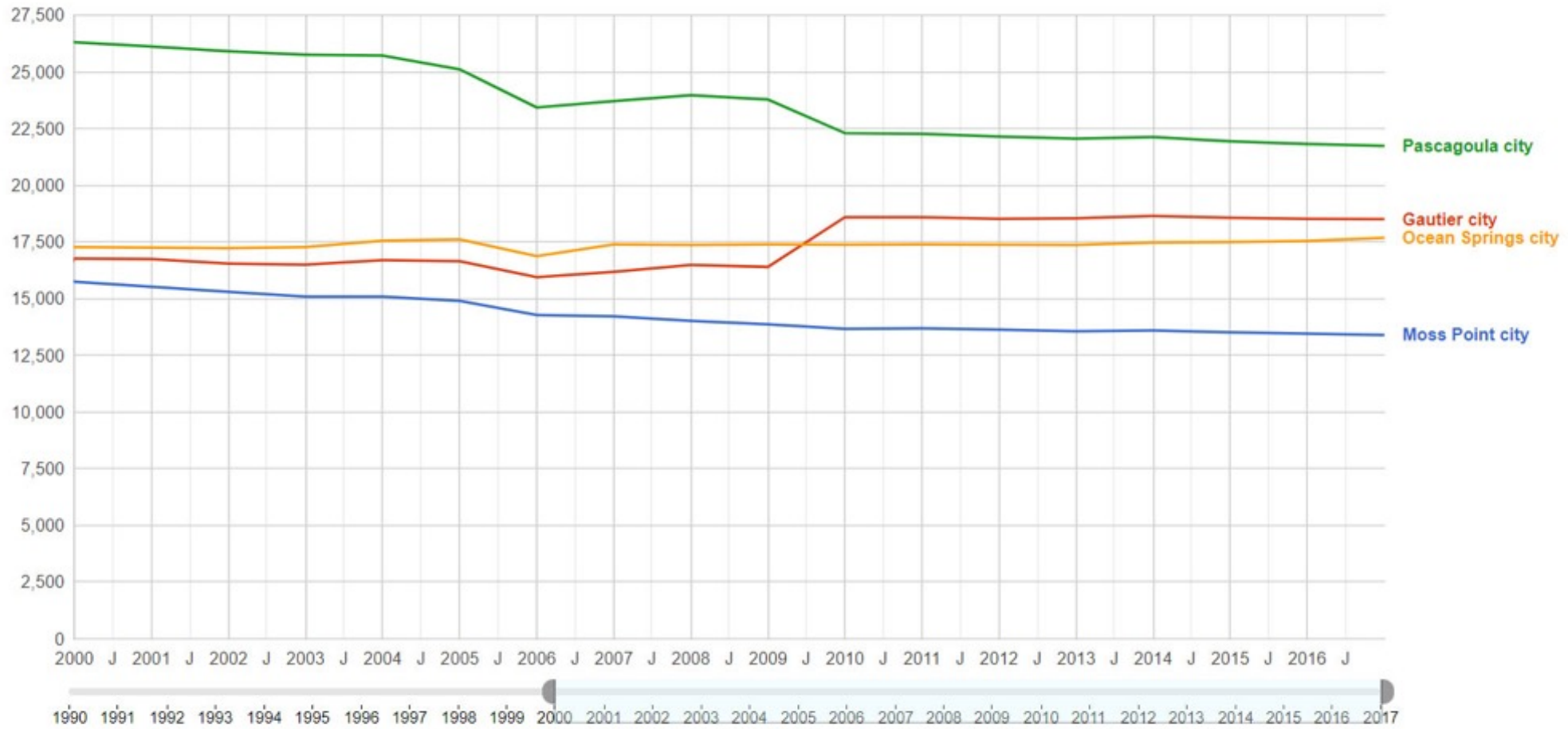
Goals by 2030

- Invest in promoting William Carey University as an emerging major healthcare campus
- Invest in a major research university by leveraging marine and ocean science and technology, national defense strategies, the Mississippi aquarium, Infinity Science Center, non-profit organizations, and the John C. Stennis Space Center
- Create an innovation center that funnels opportunities to market research and development to produce education and jobs in research

Infrastructure

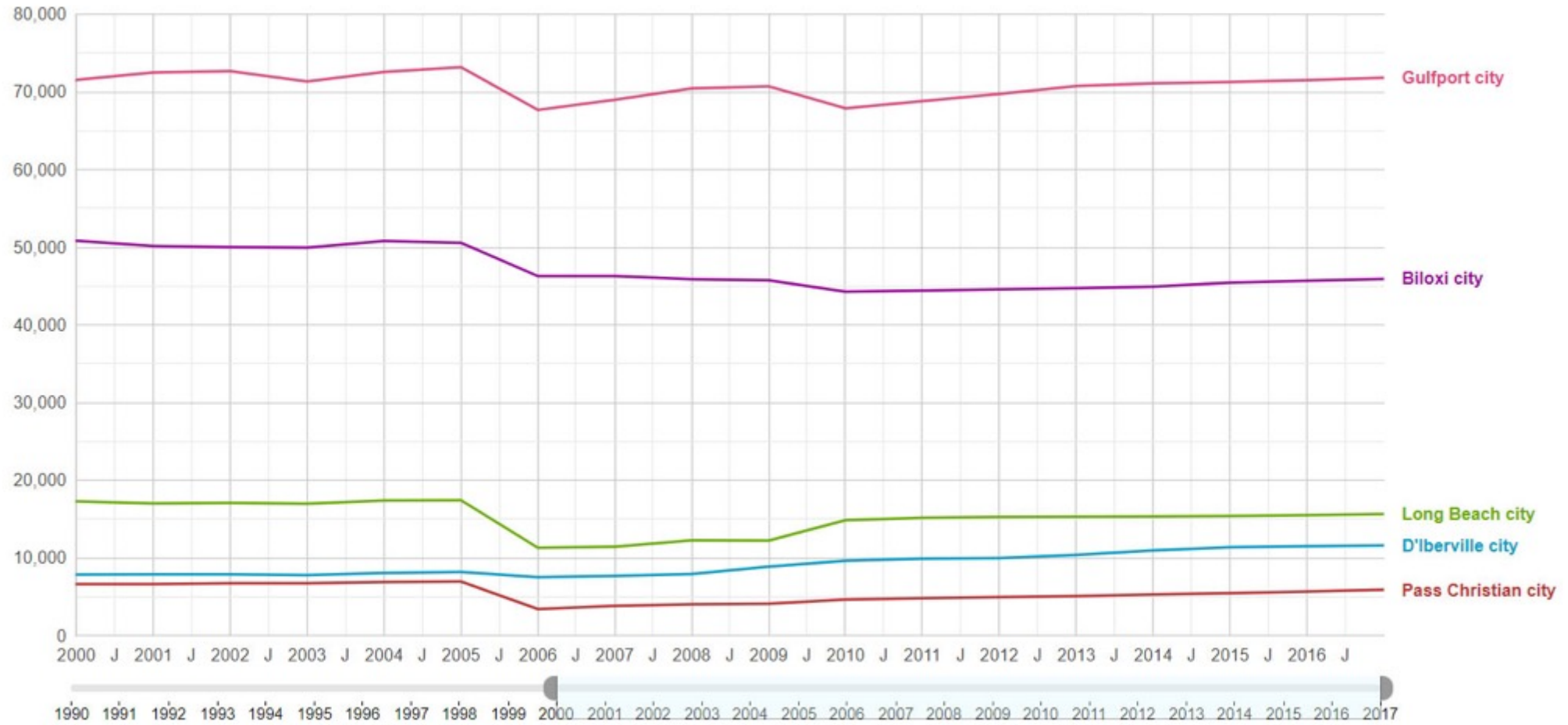


Population ? Jackson County Municipalities Population Data



Data from U.S. Census Bureau Last updated: Sep 19, 2019

Population ? Harrison County Municipalities Population Data



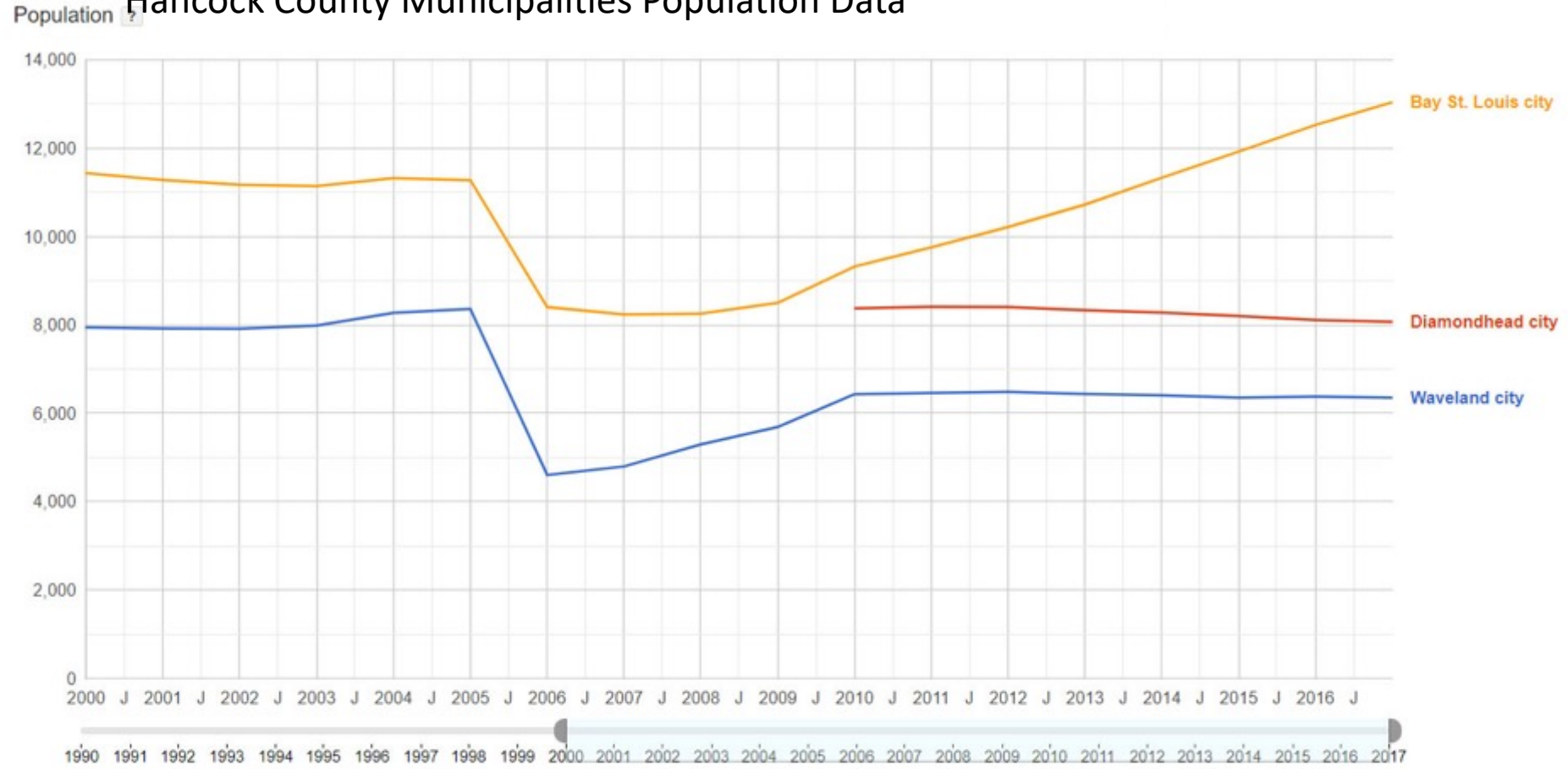
Data from U.S. Census Bureau Last updated: Sep 19, 2019

2019 MASTERS LEADERSHIP PROGRAM

BLUEPRINT

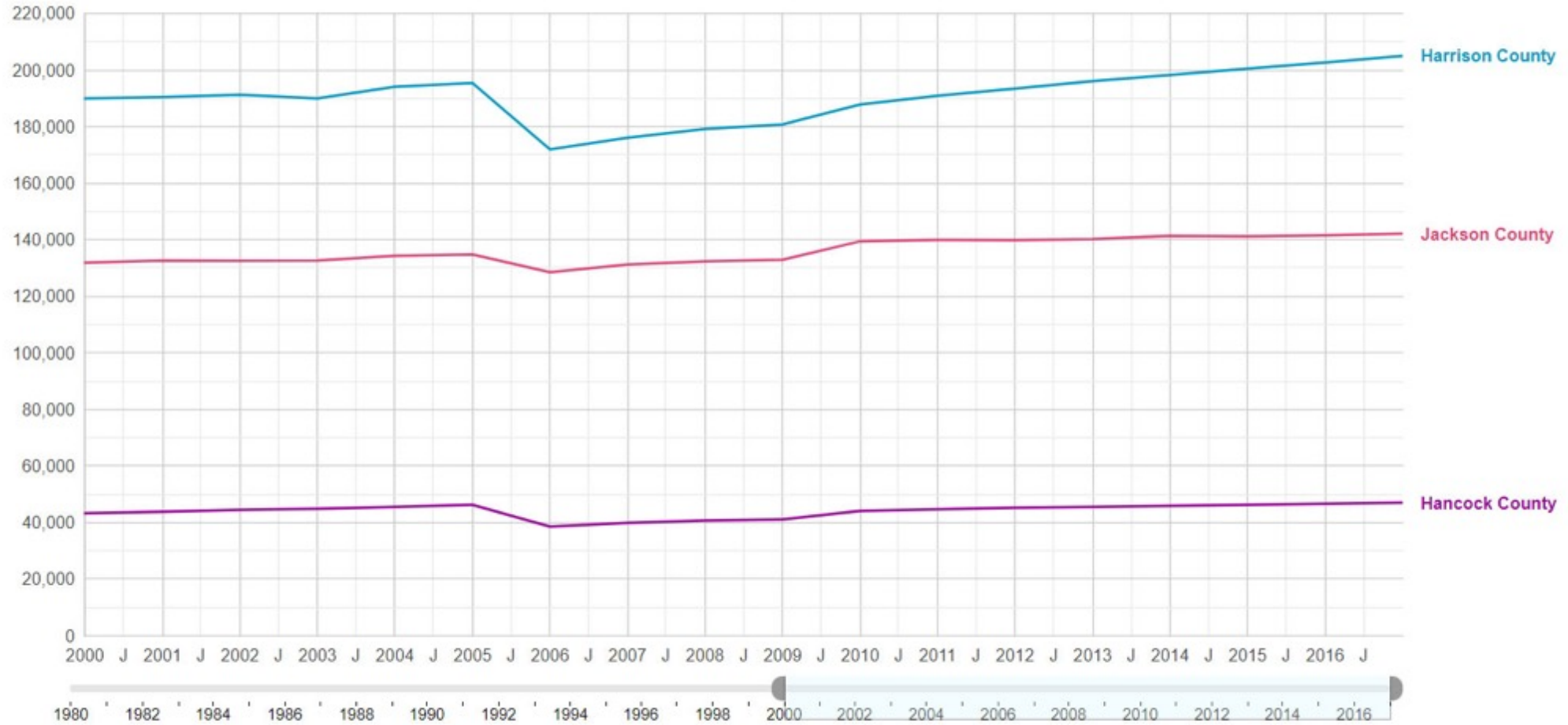
GULF COAST INITIATIVE YEAR 3

Hancock County Municipalities Population Data



Data from U.S. Census Bureau Last updated: Sep 19, 2019

Population ? Coastal Mississippi Population Data



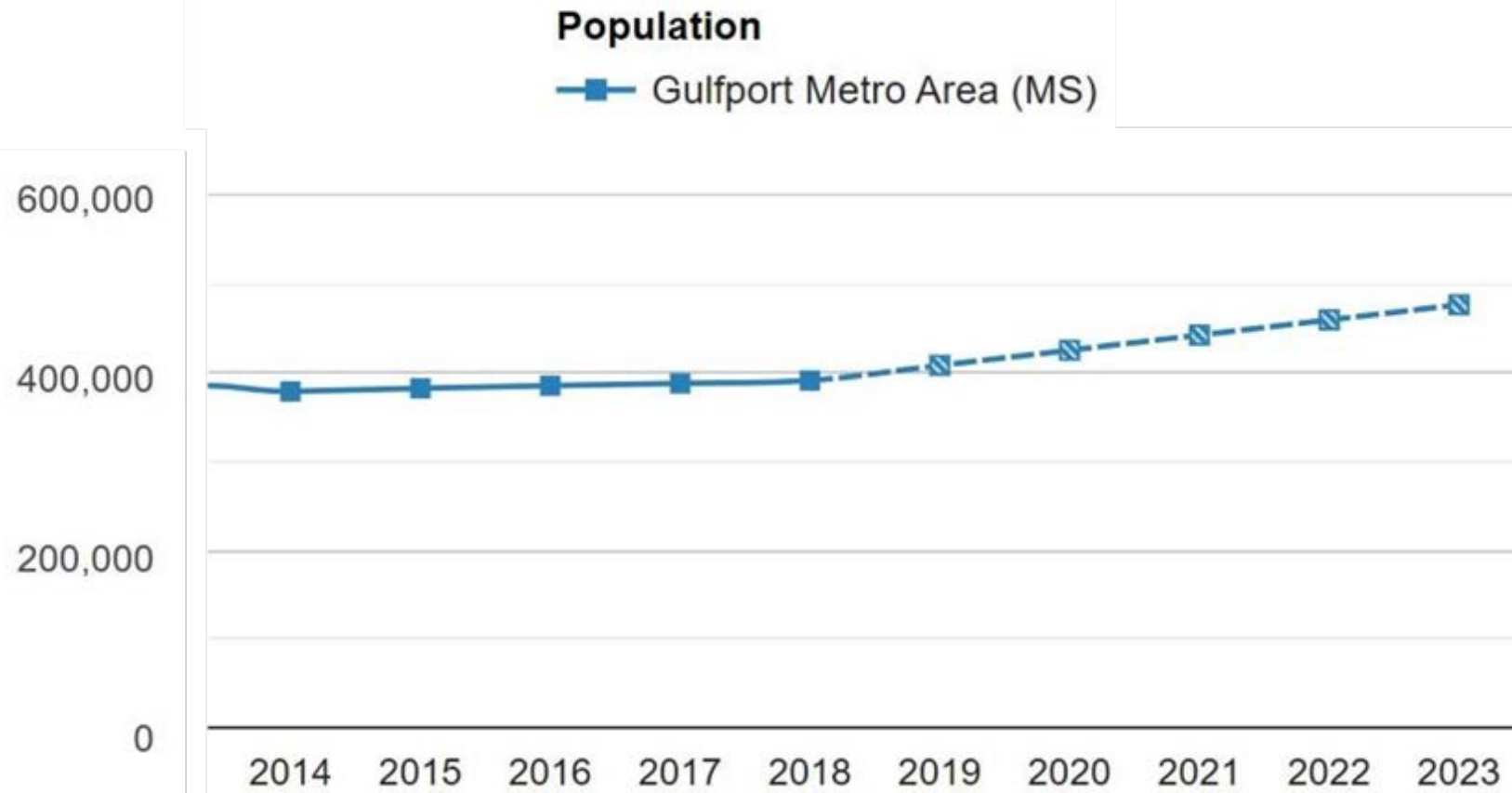
Data from U.S. Census Bureau Last updated: Sep 19, 2019

2019 MASTERS LEADERSHIP PROGRAM

BLUEPRINT

GULF COAST INITIATIVE YEAR 3

Population Projections for Gulfport MSA



Open Data Network

2019 MASTERS LEADERSHIP PROGRAM

BLUEPRINT

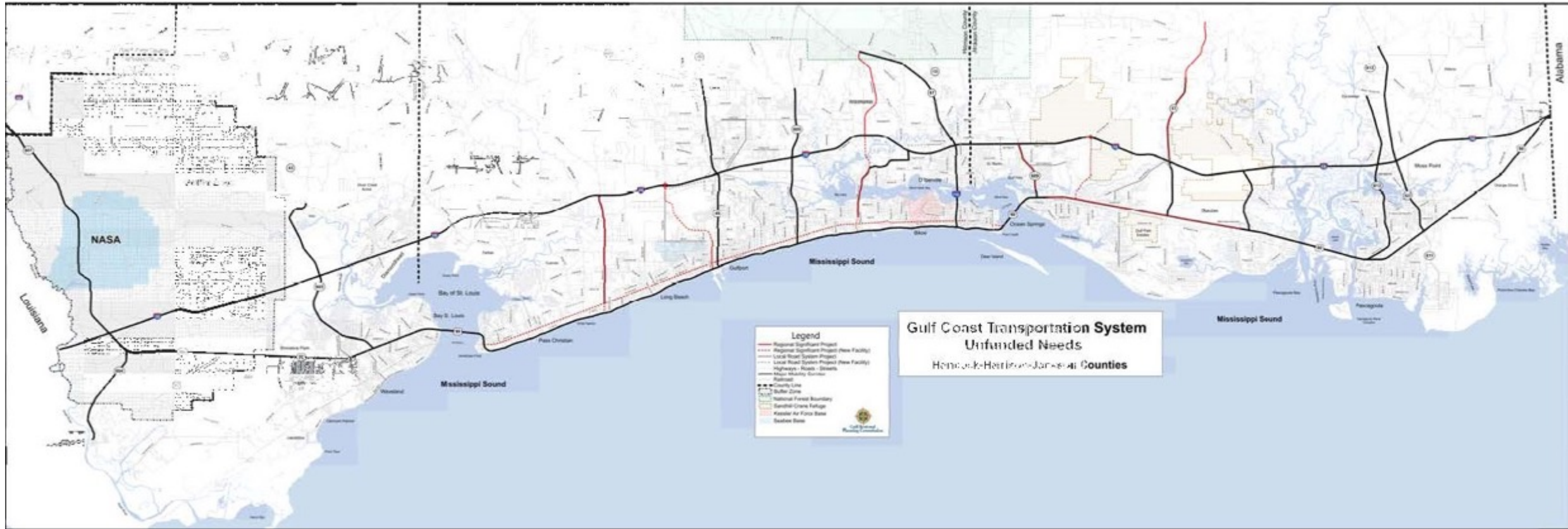
GULF COAST INITIATIVE YEAR 3

Infrastructure

Since 2005

- Parts of Coastal Mississippi are still recovering from Hurricane Katrina
- Traffic demands have increased as the areas north of the Coast have grown while new attractions/amenities are planned for Coastal areas
- Some interchanges along I-10 and major corridors leading to the Coast are overgrown, have excessive litter, and have inconsistent signage, lighting, and landscaping
- Coast Transit Authority is not accessible to all Coastal Mississippi communities
- Some downtown areas lack adequate pedestrian and bicycle facilities that new businesses, visitors, and residents have come to expect
- Broadband Internet service is only available to a small percentage of Coastal Mississippi population
- Multiple agencies within each county are charged with providing potable water and sanitary sewer services while legislation exists that allows for consolidation

GRPC Transportation System Unfunded Needs



Legend

- Regional Significant Project
- - - Regional Significant Project (New Facility)
- Local Road System Project
- - - Local Road System Project (New Facility)
- Highways - Roads - Streets
- Major Mobility Corridor
- Railroad
- - - County Line
- - - Buffer Zone
- National Forest Boundary
- Sandhill Crane Refuge
- Keesler Air Force Base
- Seabee Base



2019 MASTERS LEADERSHIP PROGRAM

BLUEPRINT

GULF COAST INITIATIVE YEAR 3

Infrastructure Recommendations

Infrastructure

Goals by 2023

- Seek funding to improve the signage, lighting, and landscaping at all I-10 interchanges in Coastal Mississippi
- Identify bicycle and pedestrian facility needs throughout Coastal Mississippi
- Plan areas for future Amtrak stations
- Work with telecommunication companies to identify existing and future fiber optic networks and plan for 5G technology. Identify gaps and unmet needs

Goals by 2026

- Utilize federal funding through GRPC to invest in bike/ped facilities in downtown areas
- Provide incentives for telecommunication companies to invest in cutting edge technology in key areas, such as 5G
- Secure state and/or federal funding for needed transportation projects to help grow our economy

Goals by 2030

- Consolidate water and sewer providers for better efficiency and eliminate duplicated services
- Invest in the safety and aesthetics of major thoroughfares in Coastal Mississippi
- Find a long-term funding source for future transportation needs, such as local option sales tax, public-private partnerships, gas tax, etc.

Quality of Life



2019 MASTERS LEADERSHIP PROGRAM

BLUEPRINT

GULF COAST INITIATIVE YEAR 3

Quality of Life Recommendations

Quality of Life

Goals by 2023

- Seek funding for municipalities to develop conceptual plans and needs for mixed use development in downtown areas
- Remove negative policies and symbols to portray Mississippi as welcoming and inclusive
- Prioritize projects to improve water quality and eliminate beach closures

Goals by 2026

- Develop policies to promote natural infrastructure and the use of green space
- Provide funding to implement public improvements identified in planning studies to make more walkable communities
- Improve development and coordination of coast-wide events

Goals by 2030

- Develop large-scale, transformational projects to protect, conserve, and restore our natural resources
- Develop cultural districts to showcase Coastal Mississippi's cultural diversity and history
- Facilitate an environment that encourages development of major amenities and attractions to diversify visitor experiences.

In Closing...



Conceptual Design of Jones Park and MS Aquarium

2019 Program Participants

- Murat Akan, Exec. Dir. Hotel & Food & Beverage, Beau Rivage Resort & Casino
- Kim Banisch, Manager, Alexander, VanLoon, Sloan, Levens & Favre, PLLC
- Stephanie Barthes, Blending and Shipping Operations Assistant, Chevron Products Company
- Jennifer Baxter, Communications Director, Hancock County Port & Harbor Commission
- Haley Broom, Equity Partner, Dukes, Dukes, Keating & Faneca, P.A.
- Brad Cates, Communications Manager, Mississippi Power
- Carrie Cole, Commercial Division Director, Coldwell Bank Commercial Alfonso Realty, Inc.
- Keith Davis, Chief of Staff, Secretary of State Office
- David Duhe', Partner, Balch & Bingham, LLP
- Brandon Elliott, Owner, Elliott Homes
- Brian Fulton, County Administrator, Jackson County Board of Supervisors
- Cori Gavin, Environmental Department Manager, Neel-Schaffer, Inc.
- Jonathan Green, Executive Director, Steps Coalition
- Kristyn Gunter, Business Outreach Division Director, Southern MS Planning & Development District
- Clay Jones, City Manager, City of D'Iberville
- Blaine LaFontaine, Board President, Hancock Co. Board of Supervisors
- Jenny Levens, Community Affairs Director, City of Long Beach
- Johnny Marquez, Director Of Coastal Programs, Mississippi Wildlife Federation
- LaShaundra McCarty, Speaker/Trainer, City of Gulfport / 3C Creative Communications & Consulting
- Dixie Newman, Councilwoman, City of Biloxi
- Lewis Pace, Dir. Of Supply Chain Management, Ingalls Shipbuilding
- Lisa Parker, Program Mgr./Workforce Development, Goodwill Industries of South Mississippi
- J.K. Pickett, CEO & Lead Pastor, Praise Temple of Biloxi
- Jason Pyron, Requirements and Capabilities Deputy, Commander Naval Meteorology and Oceanography Command - Dept. of Navy
- Michael Reso, City Manager, City of Diamondhead
- Melissa Russo, VP Communications, Public Relations & Member Services, Coast Electric Power Association
- Keva Scott, CEO, Boys & Girls Club of the Gulf Coast
- Mary Simons, Executive Director/CEO, Open Doors Homeless Coalition
- Ben Smith, Vice President, Brown, Mitchell & Alexander, Inc.